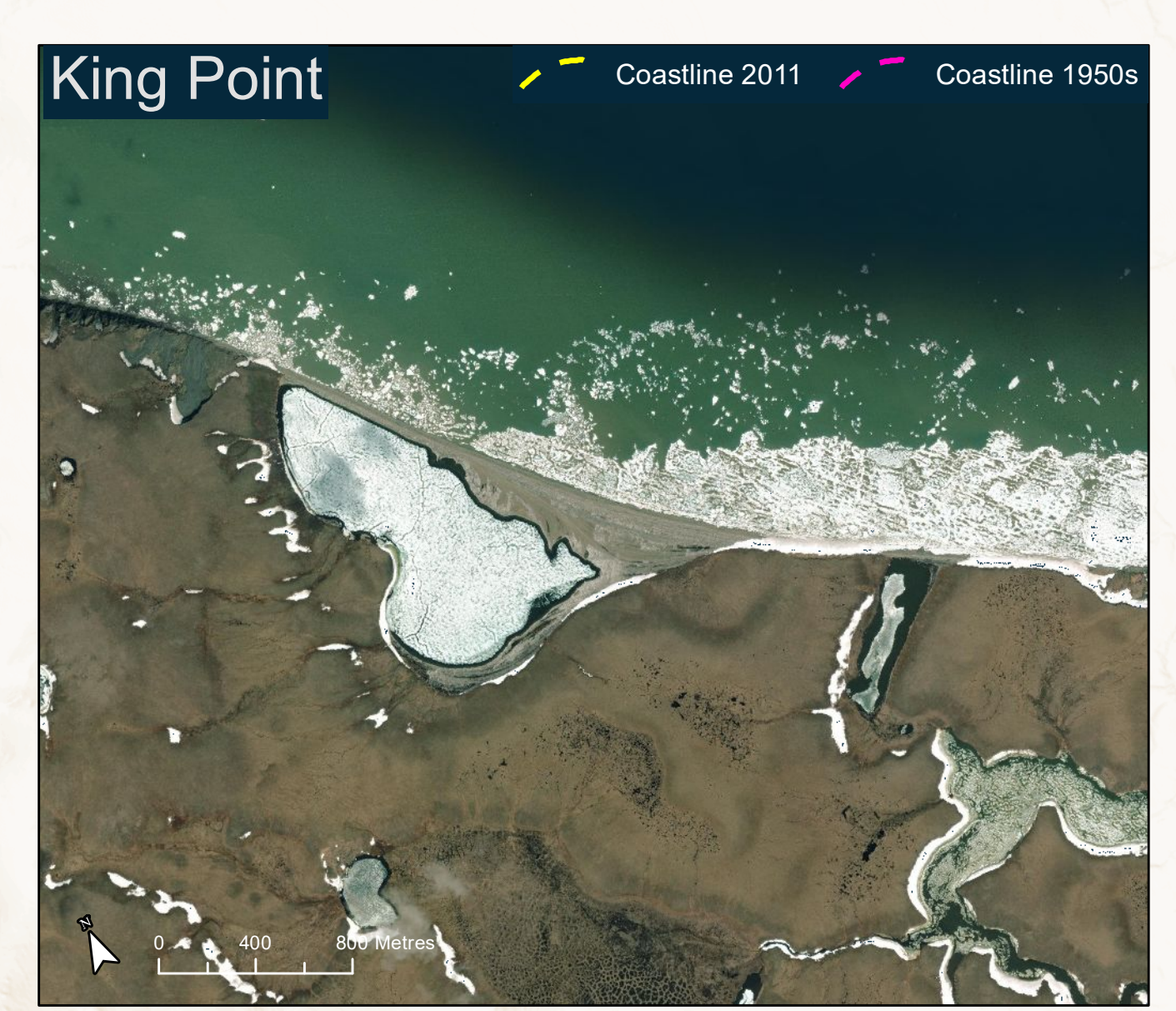
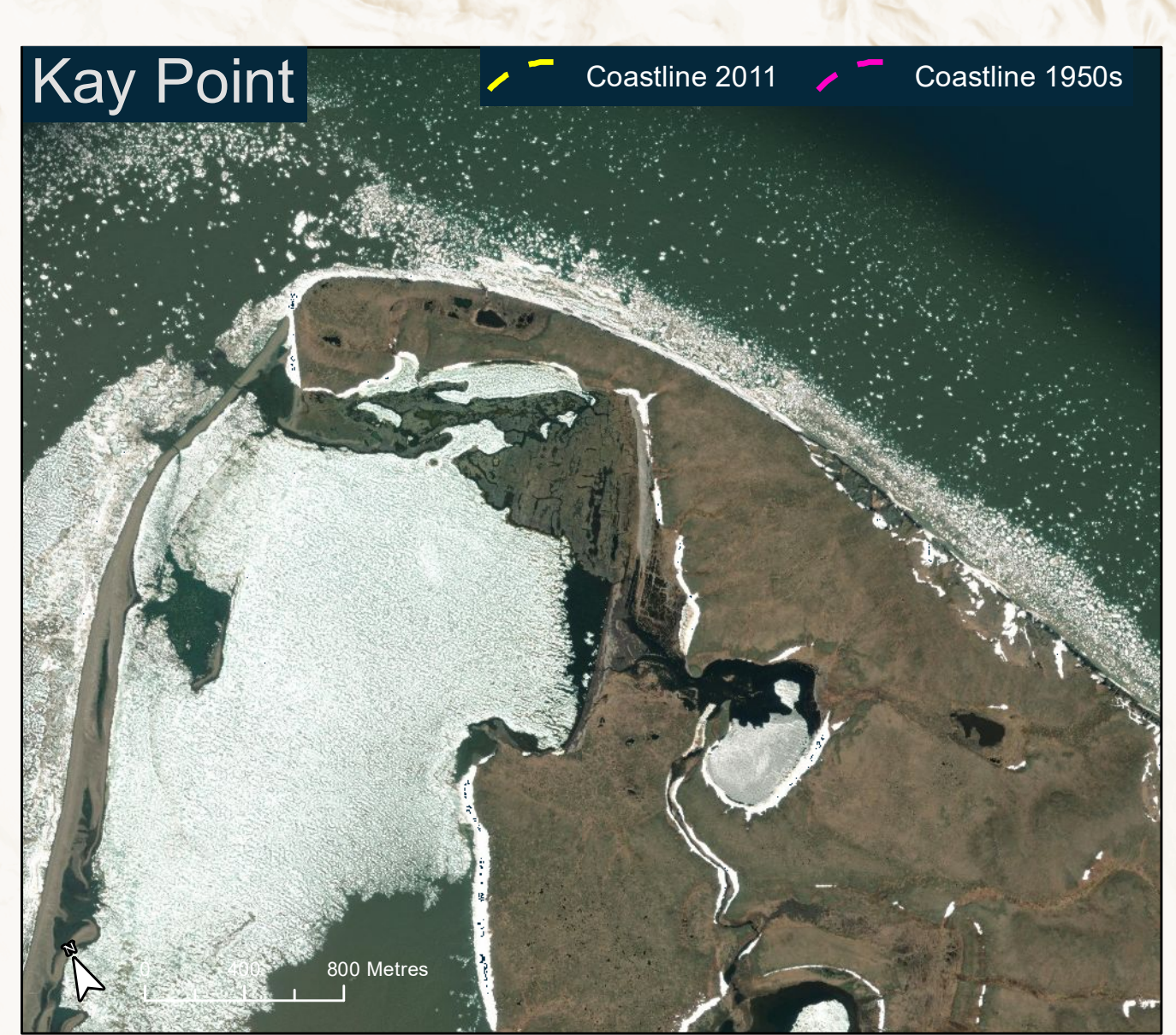
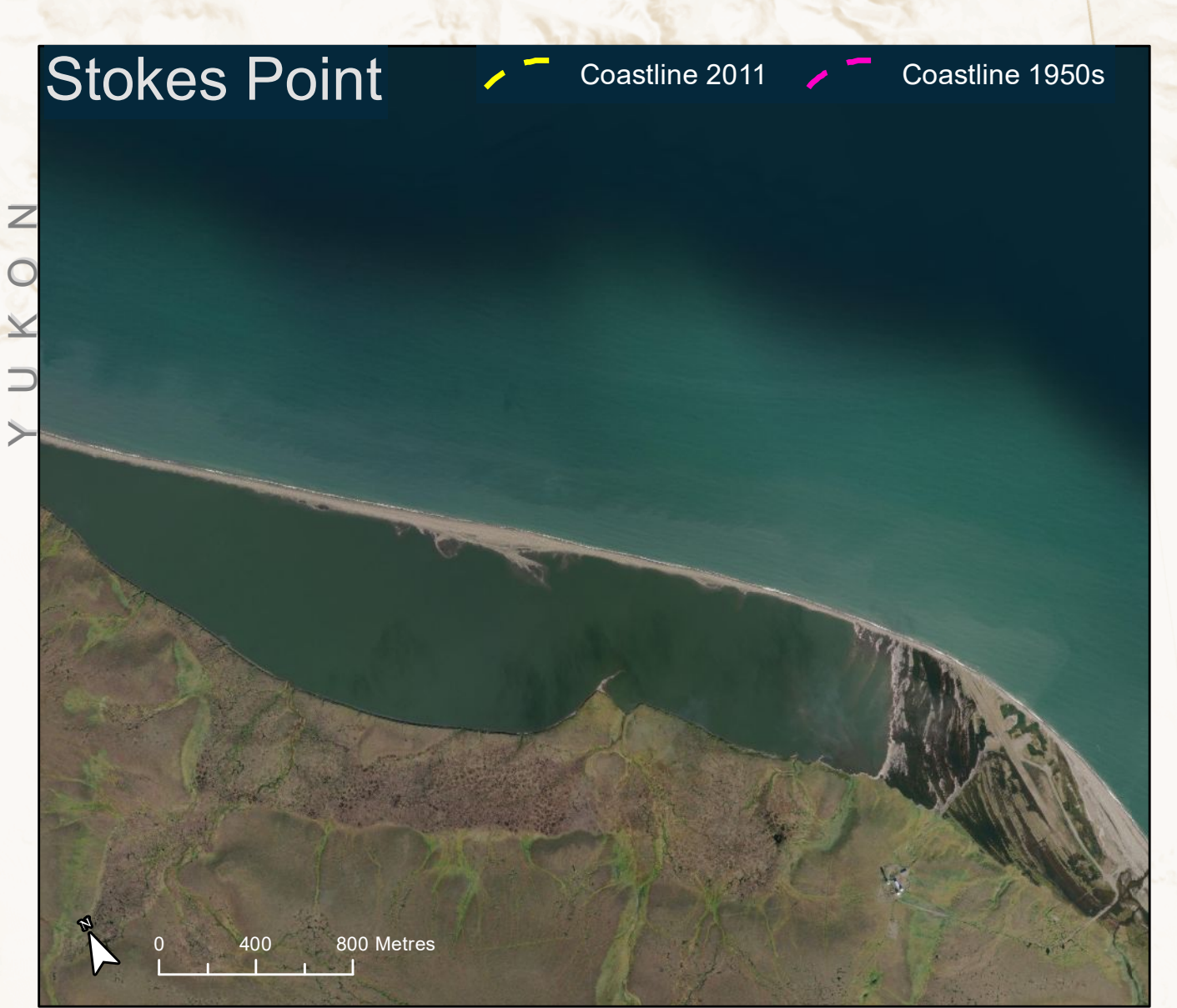


To fully interact with this map, please download the free TerraGo Toolbar https://download.terragotech.com/geopdf_toolbar_download



Climate Change on the Yukon North Slope

Coordinate System
 NAD 1983 UTM Zone 7N
 Projection: Transverse Mercator
 Datum: North American 1983
 False Easting: 500,000.0000
 False Northing: 0.0000
 Central Meridian: -166.0000
 Scale Factor: 0.9996
 Latitude Of Origin: 0.0000
 Units: Meter

Map Production Details
 Map produced by Round River Conservation Studies
 (801)-359-4250; julia@roundriver.org
 for
 Wildlife Management Advisory Council
 (North Slope)
 P.O. Box 311539
 Whitehorse, Yukon, Y1A 6K8
 (867) 633-5476; wmacns@web.ca

Wildlife Management Advisory Council
 North Slope

Base Features

- Waterbody - Permanent
- Waterbody - Intermittent
- River/Stream - Permanent
- River/Stream - Intermittent

Boundaries

- Inuvialuit Settlement Region
- Yukon North Slope
- International Boundary
- Provincial/Territorial Boundary

Purple Text = Inuvialukutun Name

Transportation

- Local Road
- Winter Road
- DEW Line Site

Conservation Status

- National Park
- Territorial Park
- Special Management Area
- Arctic National Wildlife Refuge
- Wilderness Area (U.S.)
- Marine Protected Area
- Withdrawn Areas

Shoreline Change Rates
 1950 - 2011, m/a

- 7.2 - -5.0
- 4.9 - -3.0
- 2.9 - -2.0
- 1.9 - -1.0
- 0.9 - -0.5
- 0.4 - 0.0
- 0.1 - 0.5
- 0.6 - 1.0
- 1.1 - 2.0
- 2.1 - 3.0
- 3.1 - 5.4

Cliomes

- Sparsely vegetated boreal w/ elevation influences
- Northern boreal/southern arctic shrubland, w/ an open canopy
- Northern boreal coniferous woodland, open canopy
- More densely vegetated arctic tundra w/ up to 40% shrubs but no tree cover
- More densely forested closed-canopy boreal
- Mixed boreal forest
- Dry sparsely vegetated southern arctic tundra
- Dry boreal wooded grasslands - mixed coniferous forests & grasses
- Cold northern boreal forest
- Arctic tundra w/ denser vegetation & more shrub cover incl. some small trees

Terrestrial Resilience

Higher

Lower

Change in Mean Annual Temperature, 2080s

- + 6.5 degC
- + 2.4 degC

Change in Mean Annual Precipitation, 2080s

- + 27.7%
- + 9.2%
- + 22.4%
- + 6.3%

