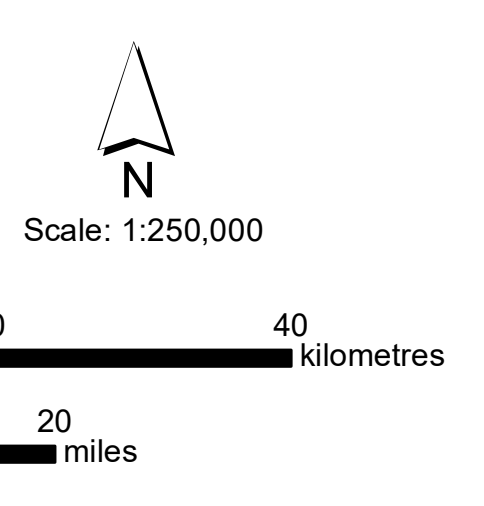


To fully interact with this map, please download the free TerraGo Toolbar
https://download.terragotech.com/geopdf_toolbar_download



Grizzly Bear on the Yukon North Slope



Coordinate System
 NAD 1983 UTM Zone 7N
 Projection: Transverse Mercator
 Datum: North American 1983
 False Easting: 500,000.0000
 False Northing: 0.0000
 Central Meridian: -141.0000
 Scale Factor: 0.9996
 Latitude Of Origin: 0.0000
 Units: Meter

Map Production Details
 Map produced by Round River
 Conservation Studies
 (801)-359-4250; julia@roundriver.org
 for
 Wildlife Management Advisory Council
 (North Slope)
 P.O. Box 31539
 Whitehorse, Yukon, Y1A 6K6
 (867) 633-5476; wmacns@web.ca

Base Features

- Waterbody - Permanent
- Waterbody - Intermittent
- River/Stream - Permanent
- River/Stream - Intermittent

Transportation

- Local Road
- Winter Road
- DEW Line Site

Boundaries

- Inuvialuit Settlement Region
- Yukon North Slope
- International Boundary
- Provincial/Territorial Boundary

Purple Text = Inuvialuktun Name

Conservation Status

- National Park
- Territorial Park
- Special Management Area
- Arctic National Wildlife Refuge
- Wilderness Area (U.S.)
- Marine Protected Area
- Withdrawn Areas

Grizzly Bear Habitat

- High Quality
- Medium Quality
- Low Quality
- Den Location

Traditional Knowledge

- Denning
- Summer
- Fall
- Spring

Traditional Use

- Site
- Route
- Area

